

SalivaChecker®

SalivaTech

Why saliva can detect cancers

Saliva is a mirror of our human body. This biofluid contains various molecules secreted from the blood through the salivary glands. Cancer is a metabolic disease that induces a high synthesis of cancer-specific metabolites. These metabolites can be detected in our saliva even though their concentrations are low. A recently developed measurement technique enables the detection of these minute concentrations of metabolites. This screening test, named SalivaChecker, analyzes the concentration pattern of these salivary metabolites and evaluates the uniqueness of this pattern using artificial intelligence.

In effect, SalivaChecker assesses your current risk of cancer.

SalivaChecker's features

Saliva is a perfectly noninvasive and accessible biofluid!

You feel no pain.

The assessment can be carried out anywhere and anytime!

The painless test enables you to get frequently tested, which increases the chance of detecting cancer at an earlier stage.

Simultaneous risk assessment of multiple cancers!

Oral, lung, colon, and pancreatic cancers can be assessed. Breast cancer can also be assessed but only in females for now.



What you have to do

Results can be provided in approximately 3 weeks after the saliva sample arrives at SalivaTech, but the period until the results are given to the patient will differ for each medical institution.

What you need to follow

Two days prior to the collection of saliva:

- Refrain from eating **beans** such as edamame, Natto, boiled beans, and other nuts.
- Clams and supplements, including ornithine, also should be avoided.

One day prior to the collection of saliva:

- Eat dinner before 21 : 00.
- Refrain from eating and drinking, except for water.

On the day of sample collection:

Refrain from taking breakfast.

Brush your teeth 2 hours before the test. Using toothpaste is allowed. Do not brush hard to prevent damage to your oral cavity.

Do not use lipstick, lip cream, and denture adhesive.

Do not take medicine. If you have to take it, inform the staff at the saliva collection point.

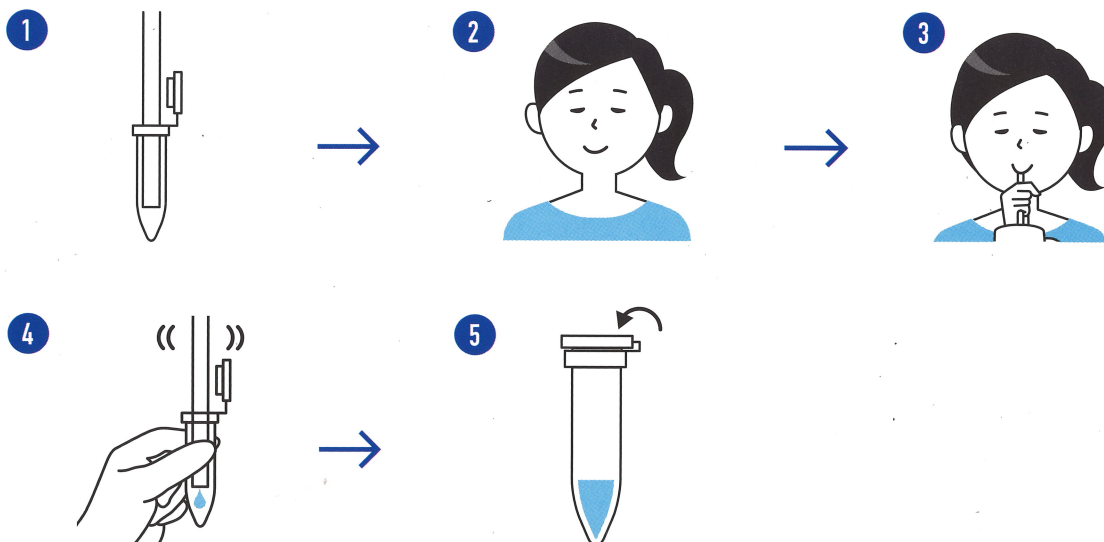
One hour prior to the test, do not perform intense exercises, clean your oral cavity (using a toothpick), or smoke.

Drink half a cup of water (approximately 100 mL) 30 minutes before the test to help with secretion of saliva. (Rinse your mouth if you cannot ingest moisture for other examinations.)

Patients with dry mouth cannot take this test.

Saliva collection

- Unstimulated saliva is necessary for testing in SalivaChecker.
- Collect your saliva in your oral cavity and drop it into the tube through a straw.
- Do not stimulate your salivary gland.



Q&A

Q. What are its advantages to blood-based tumor markers?

A. Tumor markers can detect only advanced cancers in many cases. SalivaChecker has the potential to detect cancers at an early stage.

Q. Which types of cancer risk can be evaluated?

A. Oral, lung, pancreatic, and colorectal cancer. Breast cancer can also be evaluated but only in females for now.

Q. Can this test definitely detect cancer?

A. No. This is not a diagnostic test. It is just for risk assessment.

Q. How often should I take this test?

A. The average survival of patients with pancreatic cancer is less than 6 months. Therefore, we recommend this test be administered more than 2 times per year.

Q. Can I skip other medical checkups?

A. No. In general, there is no perfect test available. SalivaChecker is also not perfect. All tests should be used in a complementary manner.

Q. Are there any important points prior to taking this test?

A. Check out the section “**What you have to follow.**” Unexpected or unanticipated risks may be calculated without following standard protocols.

Q. Can I take medicine prior to the test?

A. No, if possible. Some medicines will affect the test.

Q. Is this test covered by Japanese health insurance?

A. Currently, it is not covered.

SalivaTech Co., Ltd.

Mizukami 246, 2D-16, Kakuganji, Tsuruoka, Yamagata, Japan 997-0052

E-mail : info@salivatech.co.jp

URL : <https://www.salivatech.co.jp/>